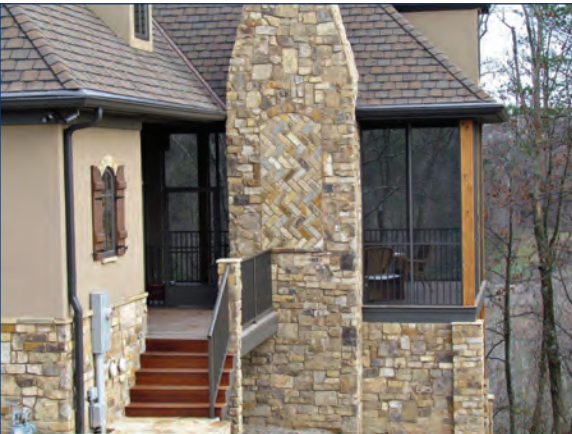




Keep the insects out with ScreenRail! Featuring the option of either a structural balcony/railing system or heavy-duty kick panel system, easy to assemble sections, assembled universal door (right or left hand hinge) with heavy-duty frame, and durable flat spline to secure screen. With a Lifetime Limited Warranty and a virtually maintenance-free product, Screen Rail is a premium system designed to keep you outdoors without being "bugged" by insects.



FEATURES

- Structural balcony and railing system
- Available heavy duty kick panel helps protect screen damage from feet
- Easy to assemble 4', 6' and 8' sections
- Assembled universal door (right or left hand hinge) with heavy duty frame
- Certified PCI 4000 A-2 (AAMA 2604) compliant powder coating
- Durable flat spline secures screen
- Different size screen material* keeps gnats, black flies, and mosquitoes out

*Screen material not supplied by DSI

SCREENRAIL WITH STRUCTURAL RAILING

SCREEN RAIL POST

ScreenRail Post, Rail Mount Cover, Rail Mount, Post Mount

2" Post 8-1/2', 9-1/2', 11-1/2'

Frame Rail 8-1/2', 12'

POST & RAIL MOUNTS

Post Mount and Screws, Rail Mount and Screws, Rail Mount Cover

Post Mount, Railing Section Mount, Bottom Rail

RAILING

SPECIFICATIONS

Lengths: 4', 6', 8'
Heights: 36", 42"
Rail Size: 2" (.060") w x 1-1/4" (.060")
Spindle Size: 3/4" x 3/4" (.053")
Frame Rail Lengths: 8-1/2', 12'
Post Size: 2" x 2" (.090)
Post Lengths: 8-1/2', 9-1/2', 11-1/2'
Door* Widths: 32", 36"
Door* Height: 80"

*Assembled universal door (right or left hand hinge) with heavy duty frame

SCREENRAIL WITH HEAVY DUTY KICK PANEL SECTIONS

DOOR

Door Header, ScreenRail Post (not supplied with door), Door Header (not supplied with door), Automatic Door Closer, Floor Line, 80", 32" x 36"

KICK PANEL RAIL MOUNT & POST

Kick Panel Rail, Kick Panel Mount, Kick Panel Rail Mount, ScreenRail Post, 11-1/4" Rail

KICK PANEL

Existing Structure, ScreenRail Rail, Kick Panel Rail Mount and Cover, Top Rail, Kick Panel, Bottom Rail, 11-1/4" Rail

SPECIFICATIONS

Lengths: 4', 6', 8'
Post Size: 2" x 2" (.090)
Post Lengths: 8-1/2', 9-1/2', 11-1/2'
Door* Widths: 32", 36"
Door* Height: 80"

*Assembled universal door (right or left hand hinge) with heavy duty frame

SCREENRAIL SCREEN INSALLATION

PROFILE SHAPES

ScreenRail Post, ScreenRail Rail, ScreenRail Rail Cover, Screen Retention Groove

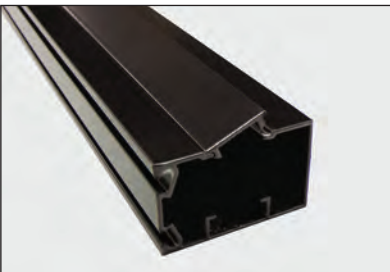
Screen & flat spine inserted into angled screen retention groove to insure tighter fit

Spline rollers used to fit screen & spline into groove

Screen is trimmed

Push Here to Snap on Cover

Rail Cover, Rail



ScreenRail cover snaps into rail
Color shown: Satin Black



*Screen material not supplied by DSI

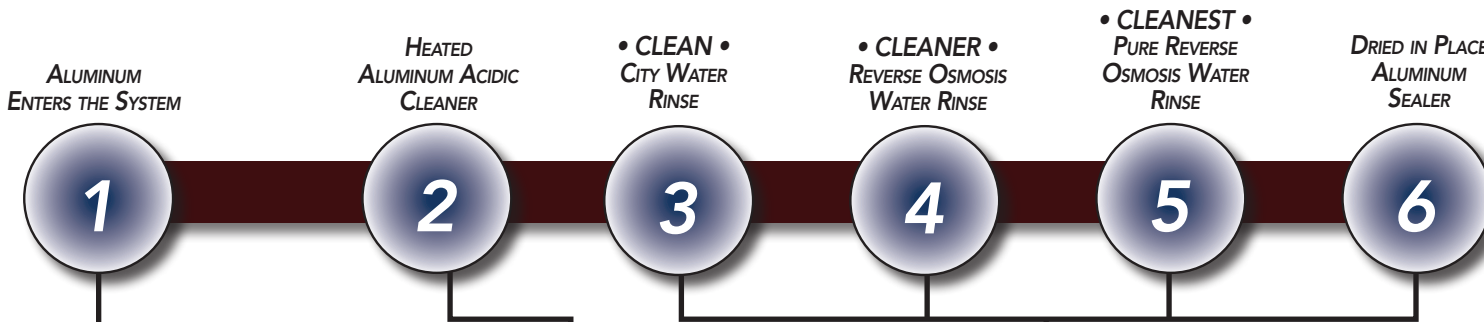
STANDARD ALUMINUM COLORS

Colors shown are a close representation of the true color. Please consult actual samples for accurate powder coating colors.

Satin Black DSI 101	Gloss White DSI 102	Gloss Beige DSI 104	Black Fine Texture DSI 106	Bronze Fine Texture DSI 107	Speckled Walnut DSI 121
Sandy Shore DSI 122	White Fine Texture DSI 123	Chocolate DSI 124	Silver* DSI 125	Clay DSI 128	Ninety Bronze DSI 131

* 15% upcharge applies to Silver with minimum order

11-STEP POWDER COATING PROCESS



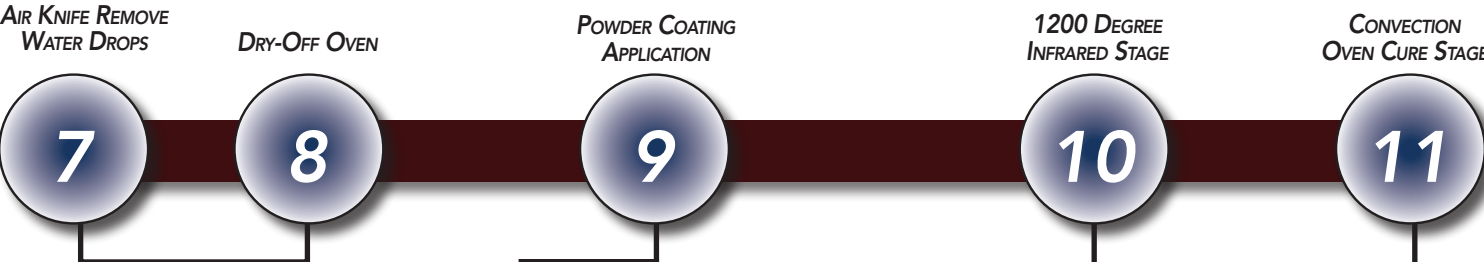
STEP #1: Our raw premium grade aluminum is inspected to be free of blemishes and is not exposed to the outdoor elements.



STEP #2: Product enters heated acidic cleaner stage to remove extrusion and fabrication oils.



The next five stages consist of a:
STEP #3: (CLEAN) City water rinse,
STEP #4: (CLEANER) Recycling reverse osmosis water rinse,
STEP #5: (CLEANEST) Pure reverse osmosis water rinse,
STEP #6: (SEALER) Dried in place aluminum sealer.



STEP #7: A 200 MPH air blast removes water drops from the pre-treated product.



STEP #8: A convection oven completes the dry-off process.



STEP #9: Powder application is applied with 12 automated guns. Compressed process air is dried to -35°F Dew Point for superior adhesion and aesthetics. The powder booth contains powder coating overspray with no emissions to the surrounding environment.



STEP #10: Quickly brings the powder coating and substrate to cure temperature for the gel cure stage.



STEP #11: The final step of the powder coating process is the 400 degree cure stage, bonding and adhering the powder coating to the aluminum substrate.

Ten pre-treat system titration checks twice per shift maintain system parameters and ten QC checks are completed every hour on product coming off the production line.

Parts are not touched by human hands during the pre-treat, dry-off, application, and cure process to maintain ultimate cleanliness of parts to be coated.



3 STEP PACKAGING

The product is protected to insure that it arrives to you damage-free



1 Post & Rails Individually Sleeved



2 Cardboard Inserts Added Protection



3 Heat-Wrapped & Banded Bundles



www.diggerspecialties.com



SOLD BY:



Designed to Keep You Outdoors



Certified PCI 4000 A-2 (AAMA 2604) Powder Coating
Lifetime Limited Warranty & A Virtually Maintenance Free Product

